

Rainbow Integrated Multitech Pvt Ltd
- creating value through services

About us...

Rainbow integrated Multitech Pvt. Ltd., (RIMPL) is an **ISO** Certified, **D&B** Verified, **NSIC** & **MSME** registered company having **1500+ employees** (Non Technical to Highly Technical). An umbrella organization that brought together entities with rich experience in the areas of,

Operation & Maintenance

of Process, Power plants and Manufacturing, etc.,

- * Performance based Contract
- * Service Linked Contracts (SLA)
- * Conditional Monitoring
- * Electrical Solution (Erection, Commissioning & Chemical Earthing)

Manpower Management

- * Line Operation, Quality Insp – Unskilled to Highly Skilled
- * Maintenance Crew (MEP),
- * Elite Security and Safety Personnel
- * H/keeping & Other M/power Outsourcing Solution

Environment Management

- * Solid Waste Management
- * Water, Waste water and Effluent Management as Turnkey Projects and O&M Services (DEO Model)
- * Liaisoning Support

**People search for a highly professional & economical one roof
Manpower Solutions company ends here.**

Leadership Team...



Dr. K. NANDHAKUMAR

B.Sc., M.A., MBA PGDP&C, PhD
MANAGING DIRECTOR

- **Having 27+ Years of various Industrial Experience**
- **Transformed HR Profession from Technical to Non Technical and Managed O&M, PMC, Construction, MEP projects etc domestic and International.**
- **Worked in the Management level for TOP MNCs like, Hyundai, Seoyon E-hwa, Qness Corp & etc.,**



Mr. K.VIJAYANAND

DCE., B.Tech., Chem., Dip Safety
DIRECTOR - OPERATION

- **Having 22+ yrs of Industrial Environment Management experience (O&M)**
- **Successfully completed many EPC Projects in the area of Water/ Waste Water, Effluent Treatment and other Project Management Activities, in TVS group of companies**
- **Managing the entire operation of RIMPL**

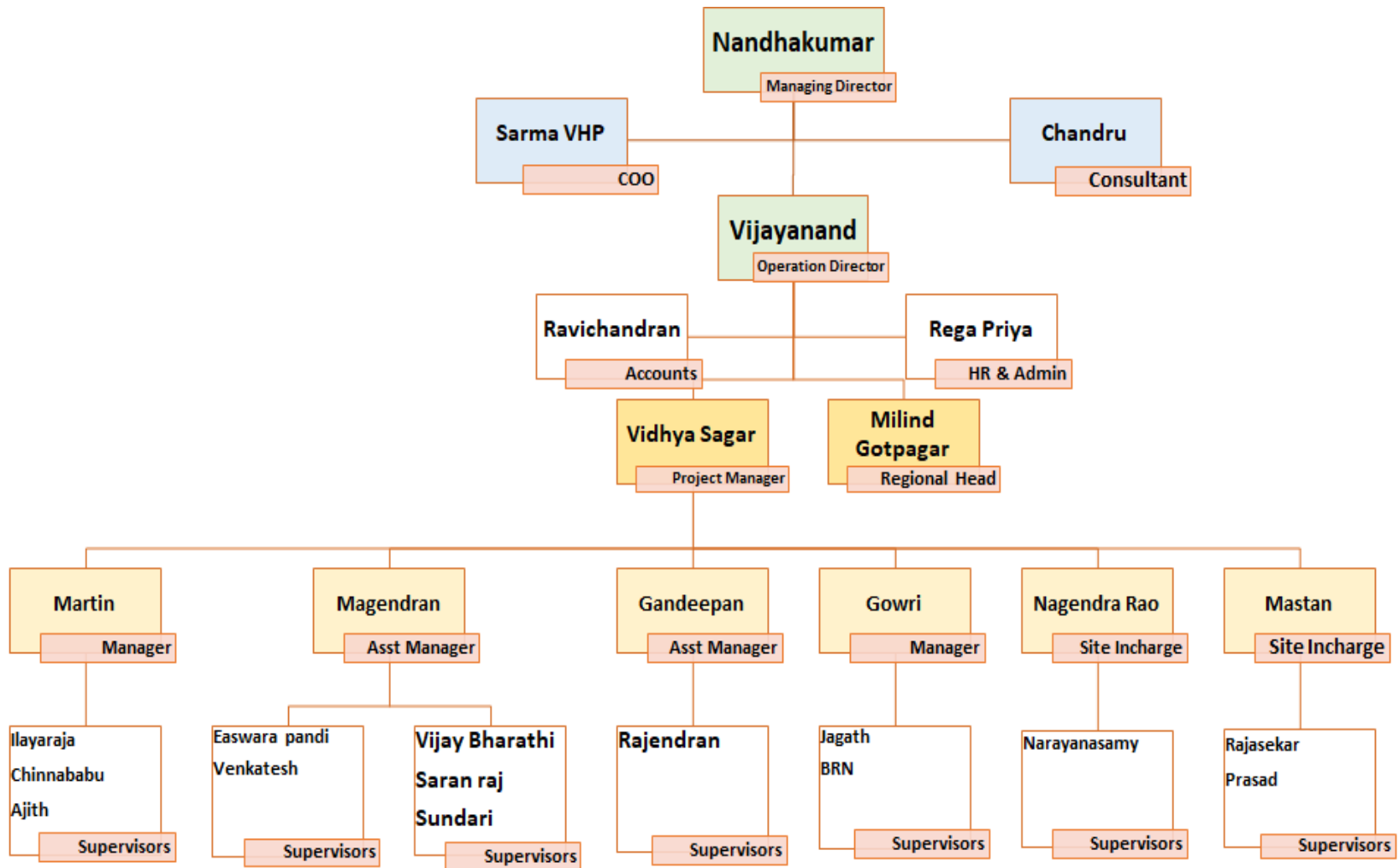
Excellent Team with vertical Managers to manage O&M, EM & IFM

Leadership Background

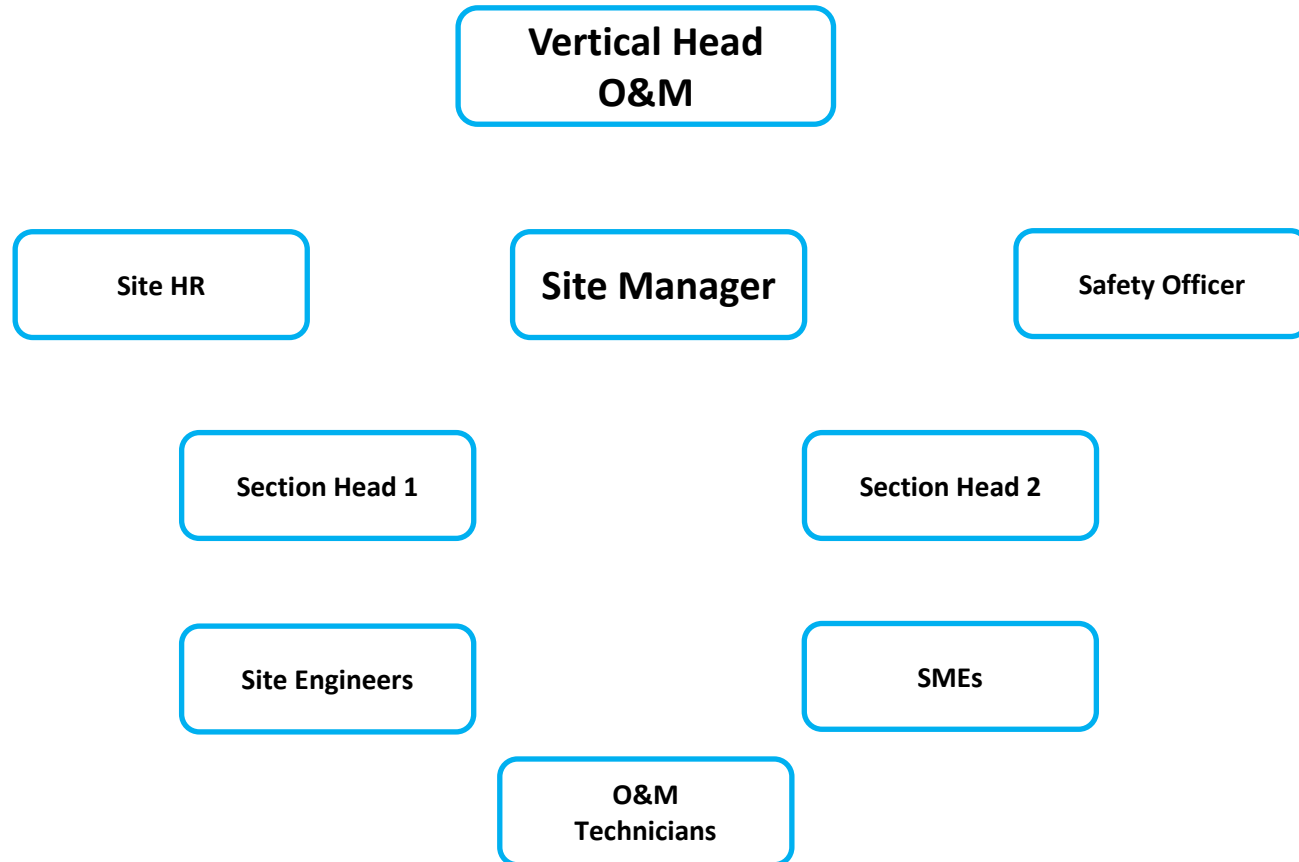
Our Leadership has a vast experience in managing the Technical Human Resources,
during his professional experience, in the following sectors:

Sector	Client	Plant Capacity	Projects Handled		Location	Crew Strength
			Mechanical	Electrical		
Cement	Chettinad Cements	30MW CPP	✓		Kallur Works, Karnataka	150
	Ultratech Cement	30MW CPP	✓		Chhattisgarh	150
Mines	Hindustan Zinc	1.2M Ton/Yr	✓	✓	Rajpura Dariba	250
	Vedanta Limited	1M Ton/Yr	✓		Lanjigarh, Odisha	250
Metal	Essar Steels	10M Ton/Yr	✓		Visakhapatnam, Andhra Pradesh	100
	JSW	18M Ton/Yr	✓		Bellary, Karnataka	200
Paper	JK Paper Mills	55MW CPP	✓		Rayagada, Odisha	100
	Sirpur Paper Mills	40MW		✓	Sirpur Telangana	100

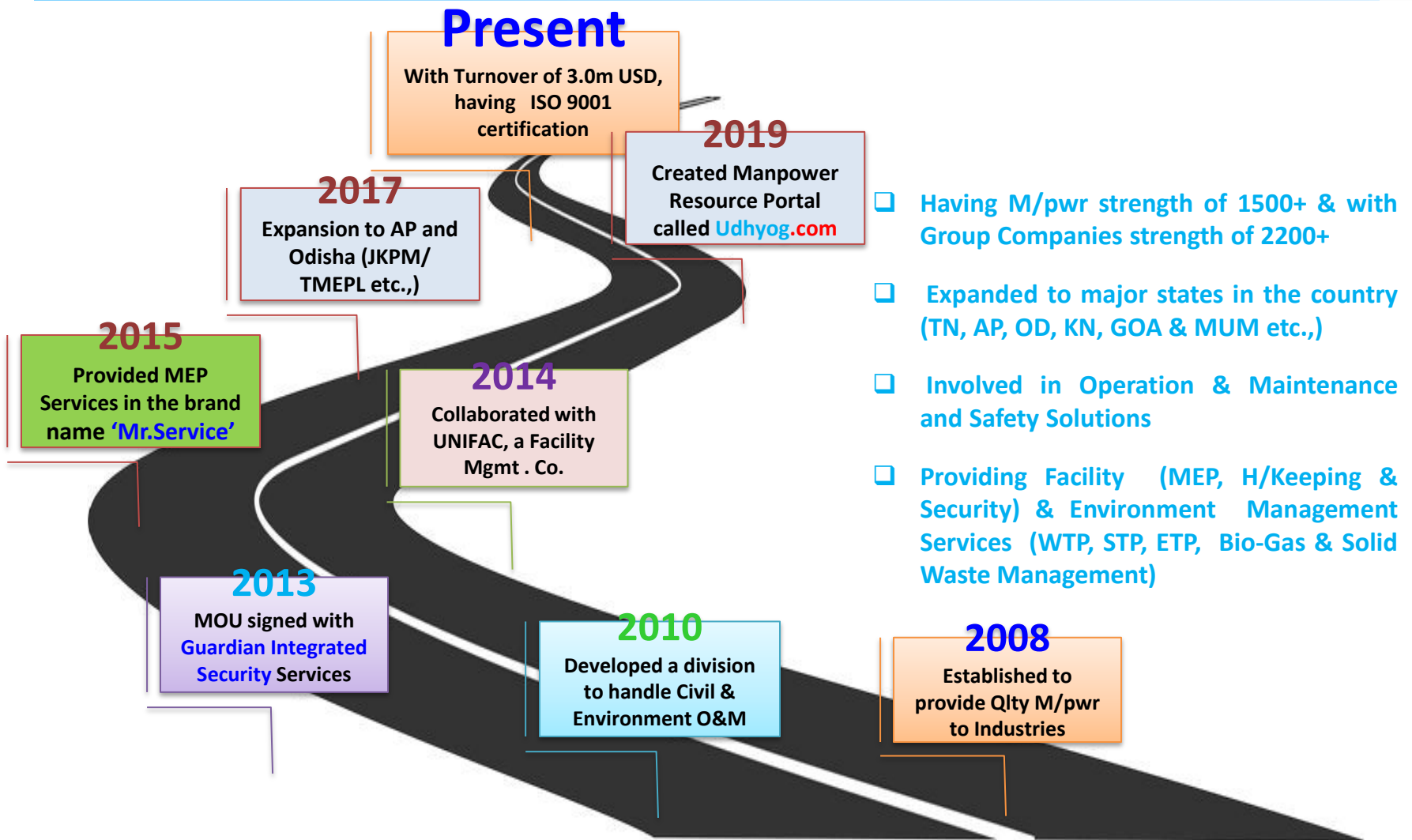
RIMPL Leaders...



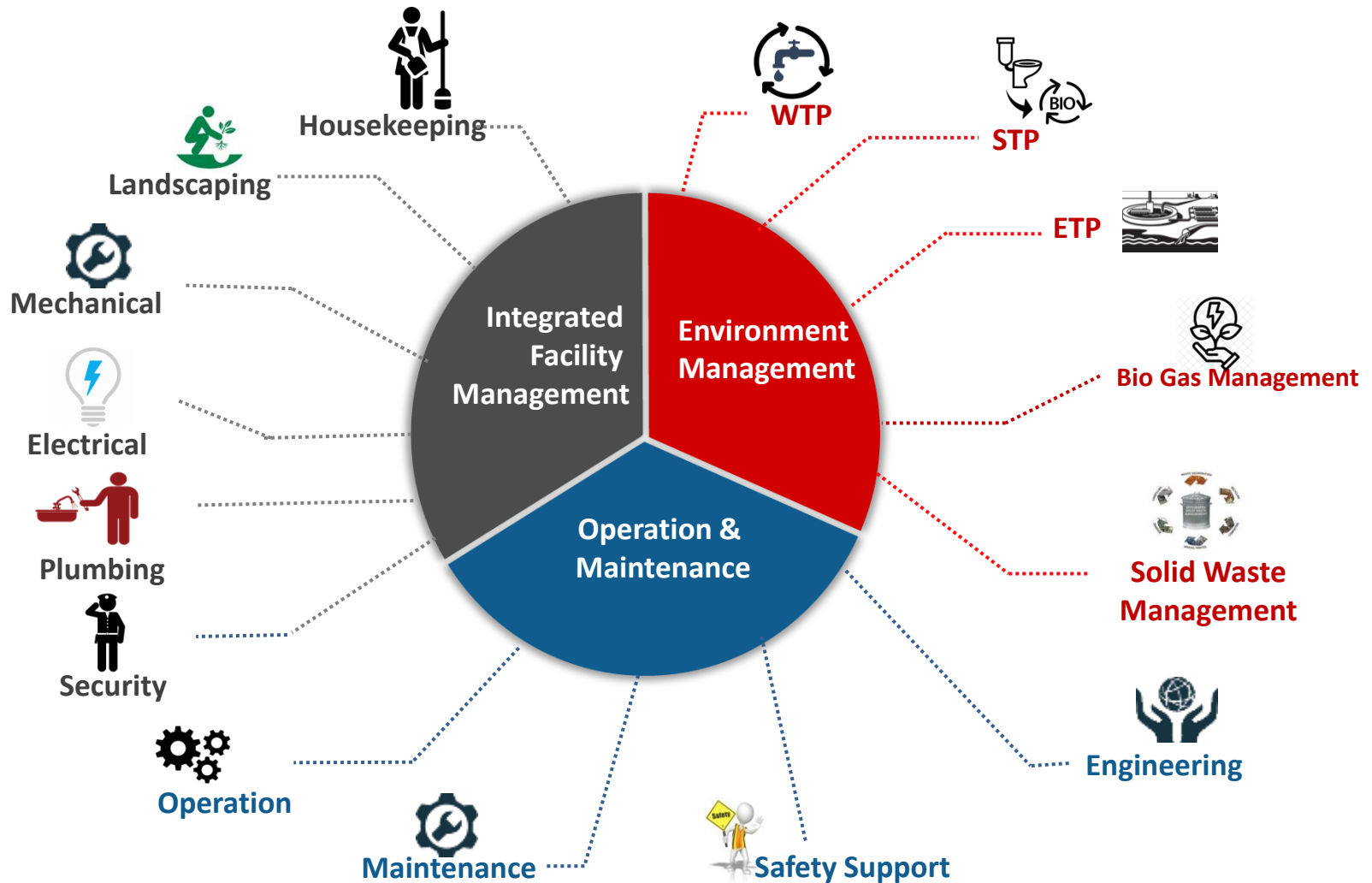
Site Management...



Key Milestones



Our Services...



Operation & Maintenance



S No	Client Name	Projects	Plant Capacity
1	Mandovi pellet Plant, Goa	Maintenance of hydraulic and rotary equipments	1.8MTPA
2	JK Paper Mills	Operation & Maintenance of Lime Kiln and Pet coke Unit	55MW CPP
3	Sirpur Paper Mills	EPC and Maintenance of Transformers, panels and Motors	40MW Co-Generation Thermal Power Plant
4	Utkal Alumina	Design and Erection of Piping System	1.5 MTPA Alumina Refinery

Engineering Service



S No	Client Name	Location	Industry Type
1	PSA Auto – Citroen (PAINTSHOP)	Tiruvallur	Automotive
2	SEYON Automotive (PAINTSHOP)	Oragadam & Ananthapur	Automotive
3	Delphi Automotive	Oragadam	Electrical Components Manufacturing
4	ACT Plast India (PAINTSHOP)	AP	Automotive
5	TAFE	Bangalore	Tractor Manfg

Environment Management



Water & Waste Water Treatment



Bio Gas Plant Management

S No	Client Name	Location	Industry Type	Operated & Maintained 10MLD of ETP / STP and 10 MT of Solid waste
1	Mahindra World City	Chengalpet	Integrated Business City	
2	Yorozu JBM Automotive	Oragadam	Automotive Industry	
3	SL Lumax	TN/ AP	Automotive Industry	
4	Harita Fehrer Limited	Sriperumpudur	Automotive Industry	

Condition Monitoring

Proposed to monitor through vibration Analysis

Step – 1 Collect useful information about the critical equipment

Step – 2 Checking the vibration using portable instrument / IOT devices installed

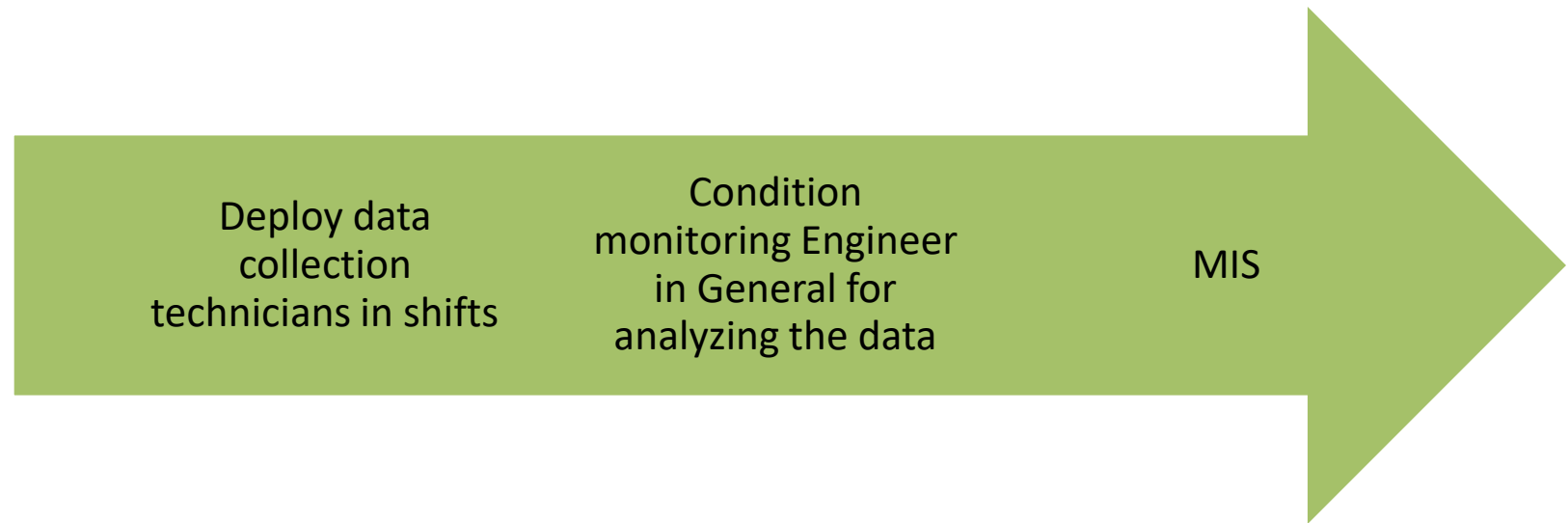
Step – 3 Preliminary Failure Analysis & reporting

Step – 4 Detailed Analysis using vibration analyser

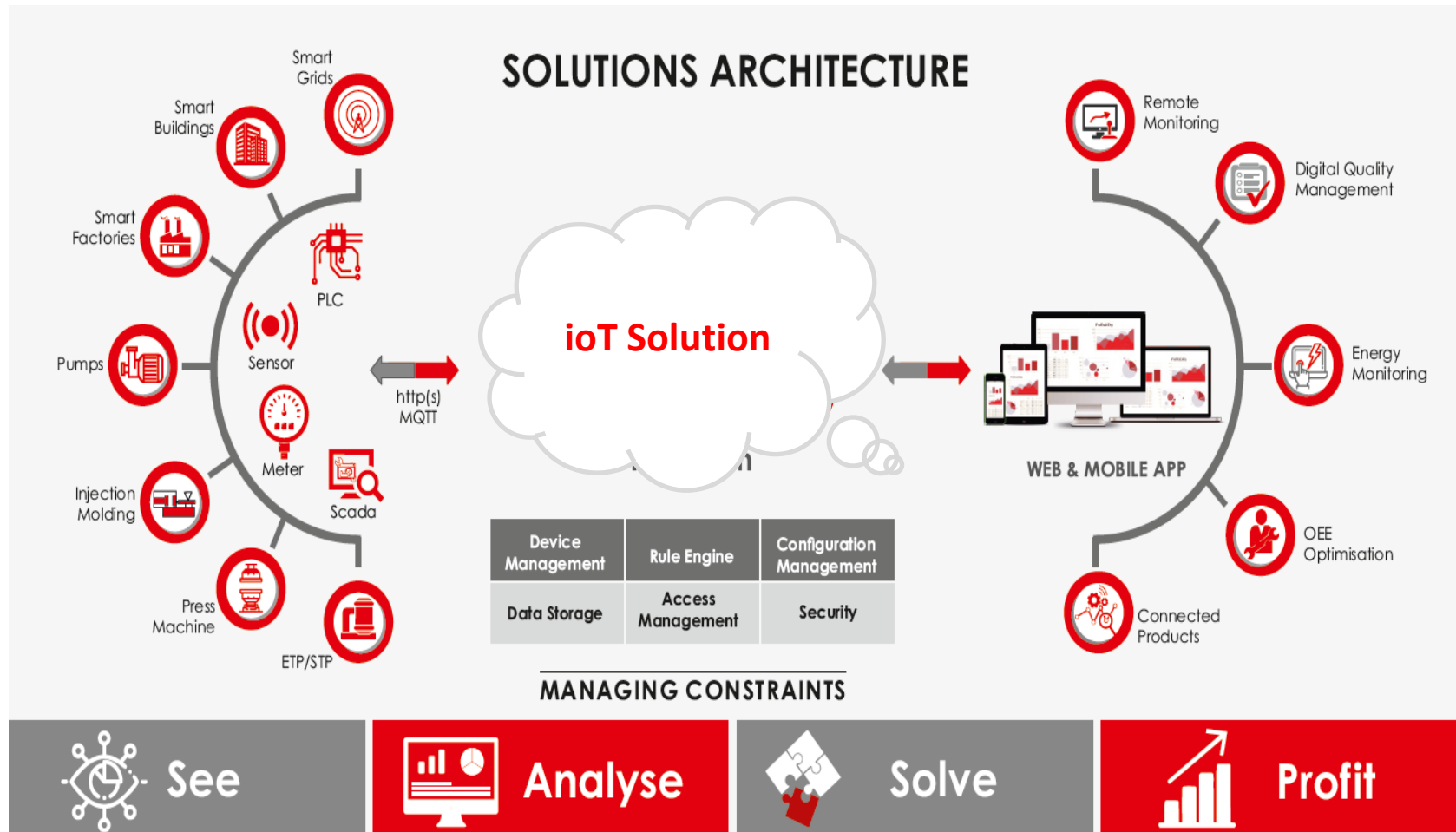
Step – 5 Final report preparation

Condition Monitoring

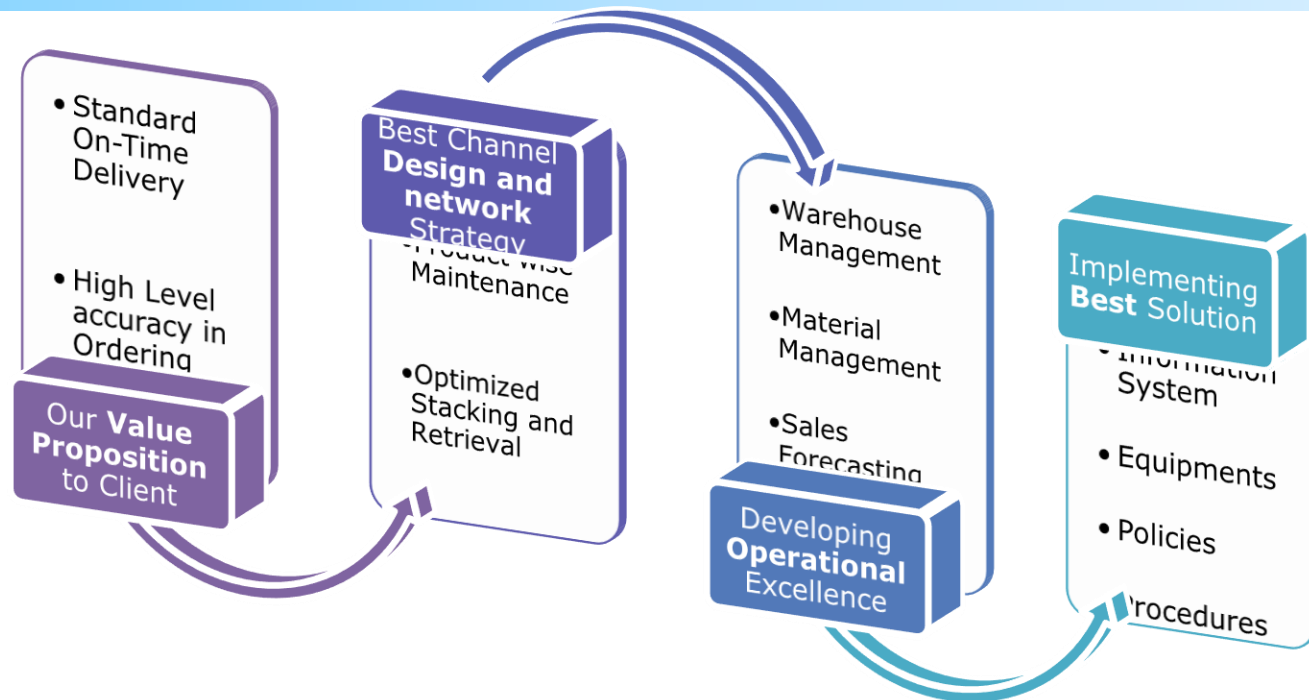
METHODOLOGY



Maintenance Analytics

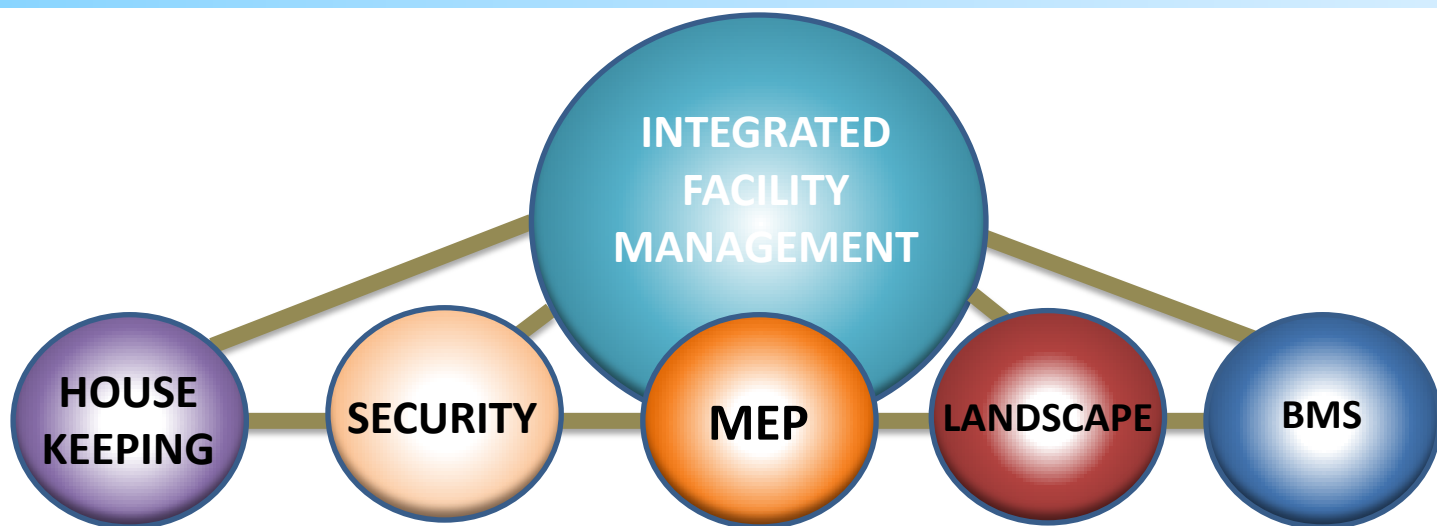


Material Management System



S No	Client Name	Projects	Plant Capacity
1	Eagle Burgman	Complete Material Management & FM	Sealant Bellow Manufacturing
2	JK Paper Mills	Complete Material Management (Loading & Unloading)	Paper Production
3	Geymt (Iceland)	Remote Monitoring Solution – Self Storage	Ware House

Integrated Facility Management

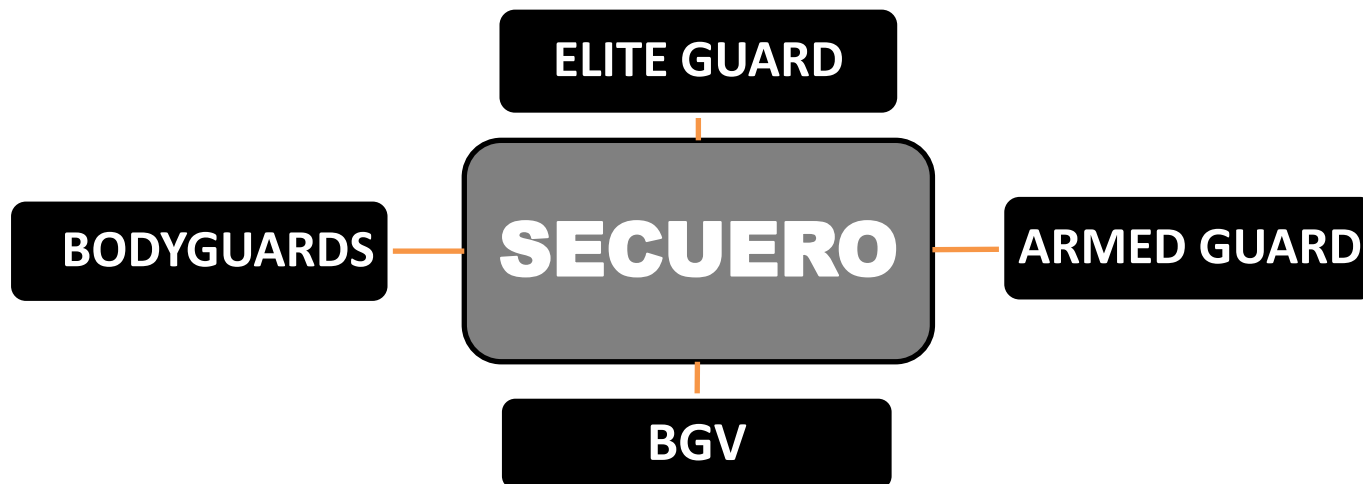


S No	Client Name	Location	Industry Type	Nature of Work
1	Eagle Burgmann KE	Gummudipoondy	Mechanical Sealing Solutions Industry	Integrated Facility Management
2	Atomic Energy (MRPU)	Chennai	Government of India Corporate Office	House Keeping and Data Management
3	SVDC	Chennai	Hospital	House Keeping and Maintenance
4	VGP	ECR	Amusement Park	Upkeeping of Premises
5	Accudyne (MR)	MWC	Manufacturing Industries	Facility Management

Integrated Facility Management



Integrated Security Service



S No	Client Name	Location	Industry Type	Nature of Work
1	Russian Embassy	Chennai	Russian Consulate	Elite Security Personnel
2	Uber India	Chennai	Customer Service	Parking Yard Management
3	Headstream India	Chennai	IT Service	Employee Security
4	PBV	Chennai	Gated Community	Common Gate Keeping
5	VGP	Chennai	Amusement Park	Premises Security

Other Staffing Services



S No	Client Name	Location	Industry Type	Nature of Work
1	Eagle Burgmann KE	Chennai	Mechanical Sealing Solutions Industry	Technical Engineers
2	TVS Logistics	Chennai	Logistics	Non Technical Officer Staffs
3	Vedantu (Veran. Learn.)	Chennai	Education	IT / ITES Staffs

Why RIMPL

UMBRELLA SERVICE

Under one roof, providing complete solution to our clients in **various discipline**

Udhyog.com

Complete Resource Management through our own Job portal, from unskilled to Highly Skilled of **various discipline**

OFFSHORE SITE MANAGEMENT

Dedicated pool of resources, Managed by **expertise leadership**

TRAINING & SKILL DEVELOPMENT

SMEs will be deployed in case of specific **T&D support** at Client premises with our exclusive pool of SME consultants

MACHINE MONITORING SYSTEM - IoT PLATFORM

Specialist approach in Equipment & Machinery Maintenance by implementing **Manufacturing Analytics system**

VALUE ADDED SERVICE

100% Employees are covered with Group Insurance (GTLI)

STATUTORY COMPLIANCE

ISO 9001 company, 100% compliance in statutory, Tax and environmental regulations



CASE IN POINT

100%

Enduring relationships with clients by providing end to end services

10+ years

Decades of engagements



Customer Satisfaction - Converted 35 Yrs of Manual Cleaning method of Furnace bed & Pent House into Automation in JKPM, Odhisa ²⁰Power Plant Maintenance

Credentials



Awards Won...

Proud Winner of,

- ✓ **"Best Workplace Management Award"** - FMB
Dubai in 2017
- ✓ **"Best Culture Award"** - KelpHR PoSH in 2020
- ✓ **"Company in Focus 2023"** - Brand Council Ratings
in 2023

Clientele....

Mahindra
WORLD CITY



• **APTIV** •

EagleBurgmann.
Rely on excellence



SL LUMAX

YORZU



 **RSB**
INDUSTRIES



 **INDOCOOL**



 **SUNGWOO HiTECH**

Contact us



RIMPL, with its industry experience, an established business network and with an entrepreneurial foresight, is well positioned to take advantage of the additional opportunities expected in the growing Industrial revolution.

Contact Info

Mail ID : vijay@rimplasia.com // knkumar@rimplasia.com

Phone : +91 9841337626 / +91 89399 44416

Website : www.rimplasia.com

Corporate Office-TN

Rainbow Integrated Multitech Pvt Lt
289/IV, Selva vinayagar koil Street,
Thiruverkadu cooperative Nagar
Velappanchavadi, Chennai – 77. TN

Regional Office – AP

Rainbow Integrated Multitech Pvt Ltd
Address: No:1-243-28, New Colony,
Madakasira Road,
Penukonda -515101. AP

Regional Office - Odisha

Rainbow Integrated Multitech Pvt Ltd
Plot No -112, Bhagbanpur,
Patrapada,
Bhubaneswar-19, Odisha

Regional Office – Mumbai

Rainbow Integrated Multitech Pvt Ltd
Shop No 13, Greenland CHS Ltd , Plot No 20,
Sector 40, Opp Neuro Hospital,
Navi Mumbai - 400706. MH

Plan of Execution (e.g.,)

Option 1:

30 days of Mobilization Period

At Proper Intervals of Overlapping deployment

Exclusive Manager Deployment for 1 month to stabilize the manpower (RIMPL Scope)

Continuous Training to Employees for the first 30 days (RIMPL Scope)

Once in 3 months. Regular review of Skill and Enhancement Training

Option 2:

15 days of Mobilization Period

Phased manner and Team/ Skill wise deployment (for e.g, Operator & Helper)

Exclusive Manager Deployment for 1 month to stabilize the manpower

Continuous Training to Employees for the first 30 days

Once in 3 months. Regular review of Skill and Enhancement Training

STANDARD OPERATING PROCEDURES

We would like to bring to your notice that, as we discussed earlier, below are the strategies in taking over any projects, FYKI

- **Taking over** of Projects, with **Available Manpower** is by **15days** notice (min takeover time)
- Taking over of Projects, with **New Manpower** is required min. of **30 days**, inclusive of two weeks overlapping period (min **Mobilization** time)
- Site **Manpower Stabilization** is required min. of **One Month** from the date of take over
- Site **Process & Responsibilities Sustainability** required min. of **Three Months**, along with monthly review with the Client (Day1 to Day90)

The above are our **Standard Operation Procedure (SOP)** with the ground reality.



THANK YOU!